



Arc of Soma
GOLF EDITION

Luxurious Sea Front Suites

Glistening on an idyllic peninsula under the Red Sea's year-round sun, Somabay is a paradise getaway famed for its clear sapphire waters, white sandy beaches and intricate tapestry of coral reefs, upping its exclusivity factor by mere topography.

01

Expertly conceived to evoke a laid-back feeling, every aspect of the heavenly development is sympathetic to nature, painting colorful experiences around its lively marina and soul-soothing jetty, so you can take recharge or decelerate.

Home to 5 luxury resort hotels and a signature portfolio of residential properties, Somabay's one-of-a-kind settings with its full complement of premium amenities are the stage for incomparable experiences alongside friends and family.



02

Nestled on 10 million square meters of lush land, life at Somabay is where fantasy-scapes follow you wherever you go and sun drenched activities take infinite elevating forms.

Introducing Arc of Soma Golf Edition.

04

An aerial view of a modern residential development at dusk. The houses are multi-story with large windows and balconies, some of which are illuminated from within. The architecture is contemporary with flat roofs and clean lines. The houses are surrounded by lush landscaping, including numerous palm trees and manicured lawns. In the background, a golf course is visible, with its green fairways and sand traps. The sky is a mix of deep blue and soft orange, indicating the time is either early morning or late evening. A road with a yellow center line runs through the foreground, curving around a landscaped area. The overall scene is one of a high-end, well-maintained community.

World-class Exclusivity

Step into a flowing reality where modern modular architecture proudly stands in absolute harmony with natural surroundings to invite panoramic beauty into every home.

Arc of Soma Golf Edition Residential Suites is a contemporary interpretation of exclusive living by the sea where impressive aesthetics seamlessly blend with breathtaking views to re-define the exceptional in every form. Crowning the tip of Somabay's peninsula, your life at Arc of Soma Golf Suites is a signature invitation to connect with uninterrupted nature while marveling in endless blue wherever you turn – thanks to a prime location that places your life at the intersection of tranquility and water-filled memories.



05

Arc of Soma

Crowning the Tip of Somabay's Peninsula

Arc of Soma Golf Edition Residential Suites is expertly nestled at the tip of Somabay's peninsula, setting it as a unique sanctuary of calm where clear blue skies meet the open sea. The project's unrivaled location allows residents to forge an exclusive connection with virgin nature while enjoying contemporary living, thanks to modular designs that invite the outdoors inside.



06

*Drone Image



Arc of Soma
Golf Edition.

Arc of Soma Masterplan.



From afar Arc of Soma Golf Suites look like an iconic landmark.

Up close, the contemporary modular design lends each building its aesthetically pleasing appeal to carve new standards in world-class elegance by the sea. Designed with nature and modern-day functionality in mind, Arc of Soma Golf Edition Residential Suites boast sleek glass facades that open onto infinite sea views while enjoying a staggered alchemy to ensure utmost privacy for all residents alike.



09



10



11



12

13



Building Type 5



14



15

Unit Type

–

Grand Suite



17



18



19



20



21





23



Floorplan.

Grand Suite

Gross Area
146.60 m²

Living Area
4.55 × 4.65

Master Bedroom
4.55 × 3.60

Master Bathroom
3.20 × 1.70

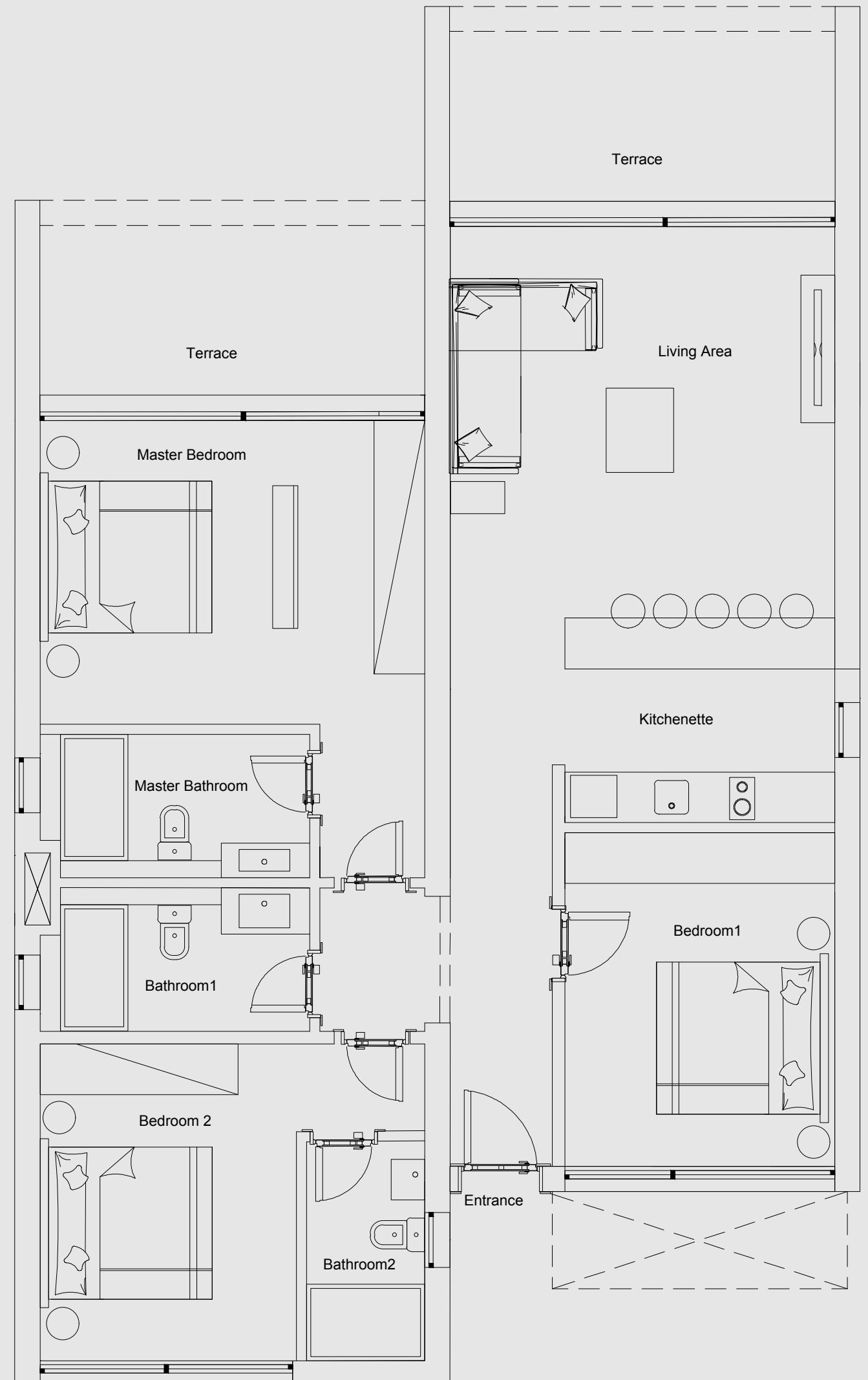
Kitchenette
3.20 × 2.40

Bedroom 1
3.20 × 3.95

Bathroom 1
3.20 × 1.70

Bedroom 2
3.04 × 3.75

Bathroom 2
1.40 × 2.60



25

DISCLAIMER 1. Drawings are not to scale. 2. The architectural details, dimensions and area in this plan are based on Schematic Design information only, and final As-Built conditions may vary. 3. All units are sold as unfurnished apartments, without furniture and furnishings, without white goods provisions, etc. 4. All images used are for illustrative purposes only and do not represent the actual size, features, specifications, fittings, and furnishings. 5. Somabay reserves the right to make revisions/alterations, at its absolute discretion, and without liability.

Unit Type

–

Single Suite



27



28



29



Floorplan.

Single Suite

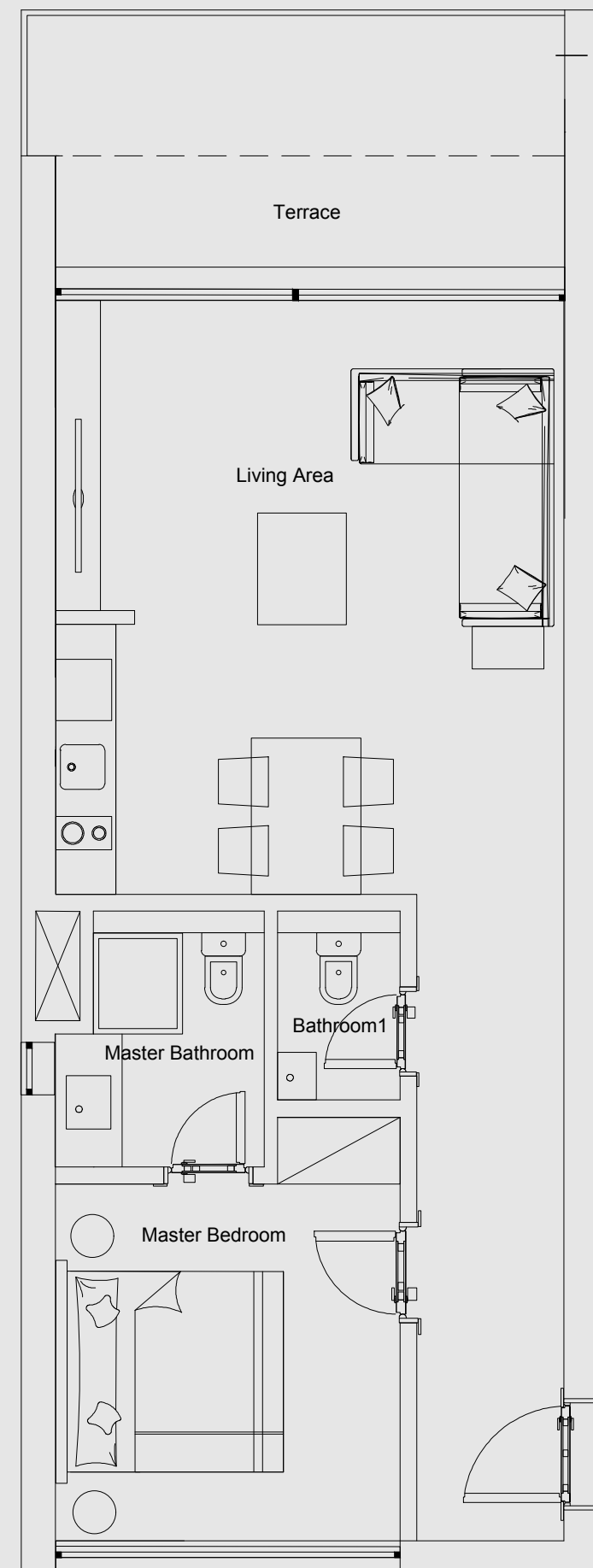
Gross Area
73.00 m²

Living Area
4.55 × 5.35

Master Bedroom
3.10 × 3.20

Master Bathroom
1.85 × 2.30

Bathroom
1.10 × 1.70



31

DISCLAIMER 1. Drawings are not to scale. 2. The architectural details, dimensions and area in this plan are based on Schematic Design information only, and final As-Built conditions may vary. 3. All units are sold as unfurnished apartments, without furniture and furnishings, without white goods provisions, etc. 4. All images used are for illustrative purposes only and do not represent the actual size, features, specifications, fittings, and furnishings. 5. Somabay reserves the right to make revisions/alterations, at its absolute discretion, and without liability.

Unit Type

—

Duplex Penthouse

Available only in Building Type 6B



33





35



36



37



38

Floorplan.

Duplex Penthouse

First Floor

Gross Area
139.00 m²

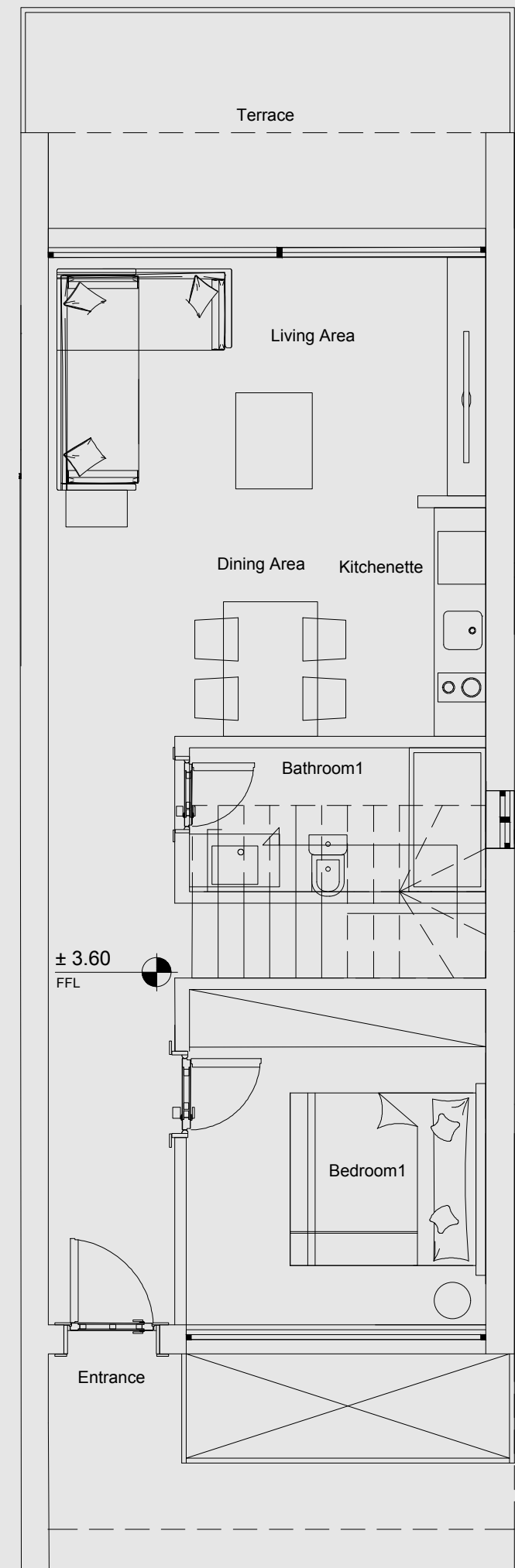
Roof Terrace
62.00 m²

Living Area
4.55 × 2.60

Dining Area
4.55 × 2.40

Bedroom 1
3.10 × 3.50

Bathroom
3.10 × 1.50



39

DISCLAIMER 1. Drawings are not to scale. 2. The architectural details, dimensions and area in this plan are based on Schematic Design information only, and final As-Built conditions may vary. 3. All units are sold as unfurnished apartments, without furniture and furnishings, without white goods provisions, etc. 4. All images used are for illustrative purposes only and do not represent the actual size, features, specifications, fittings, and furnishings. 5. Somabay reserves the right to make revisions/alterations, at its absolute discretion, and without liability.

Floorplan

Duplex Penthouse

Second Floor + Roof

Gross Area
139.00 m²

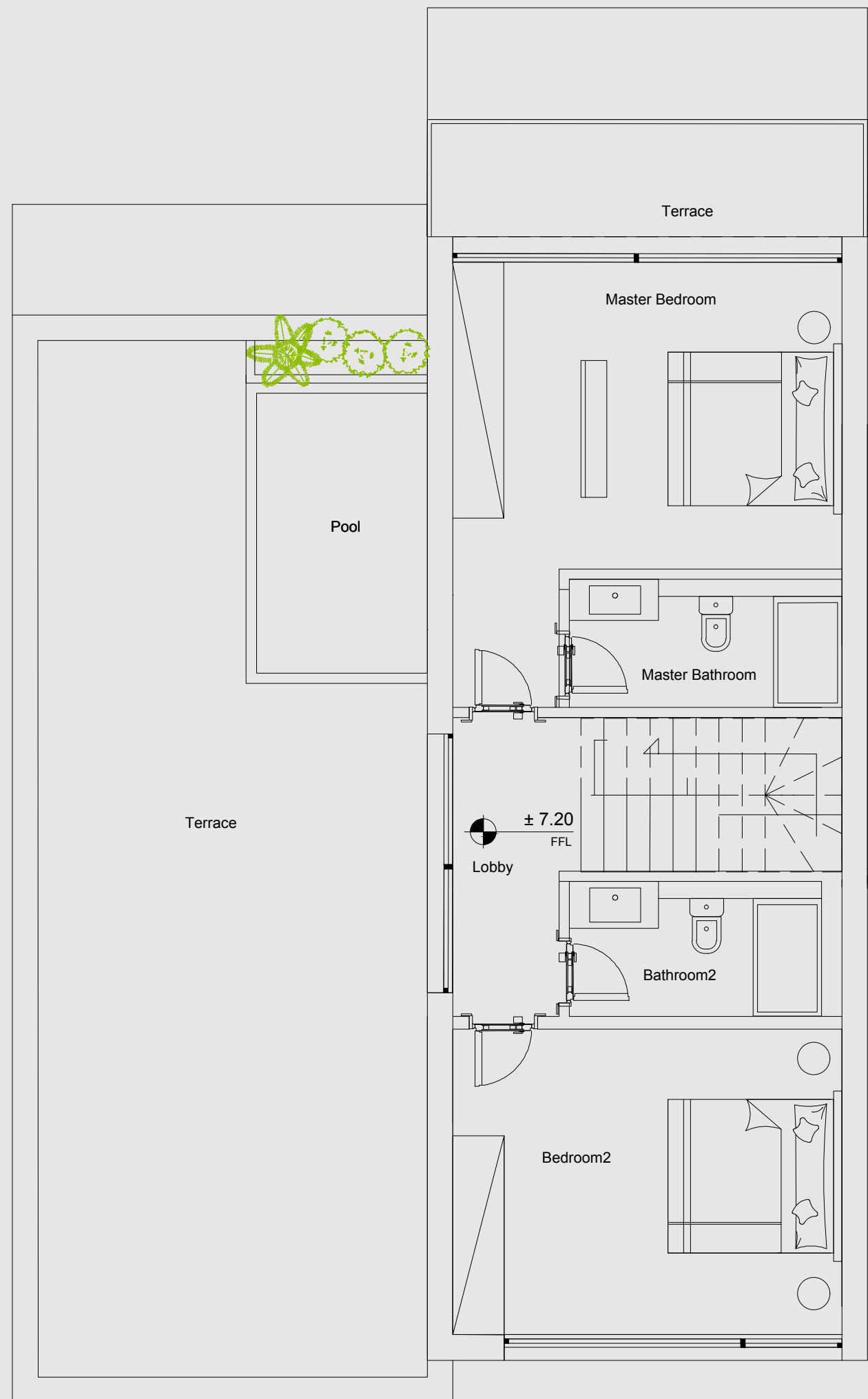
Roof Terrace
62.00 m²

Master Bedroom
4.55x3.60

Bedroom 2
4.55x3.60

Master Bathroom
3.20x1.50

Bathroom 2
3.20x1.60



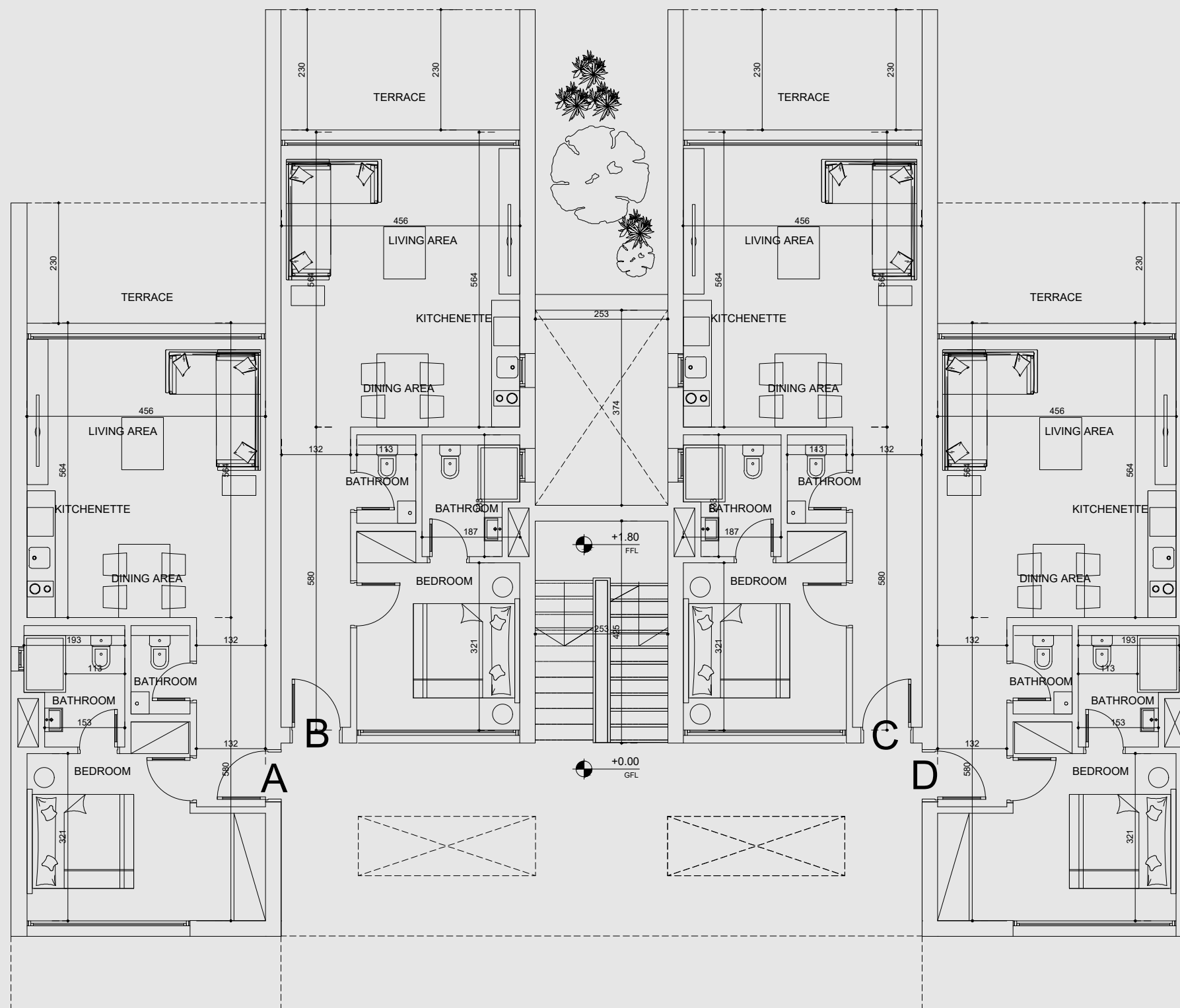
40

DISCLAIMER 1. Drawings are not to scale. 2. The architectural details, dimensions and area in this plan are based on Schematic Design information only, and final As-Built conditions may vary. 3. All units are sold as unfurnished apartments, without furniture and furnishings, without white goods provisions, etc. 4. All images used are for illustrative purposes only and do not represent the actual size, features, specifications, fittings, and furnishings. 5. Somabay reserves the right to make revisions/alterations, at its absolute discretion, and without liability.

Building Type Five.

Building Type 5

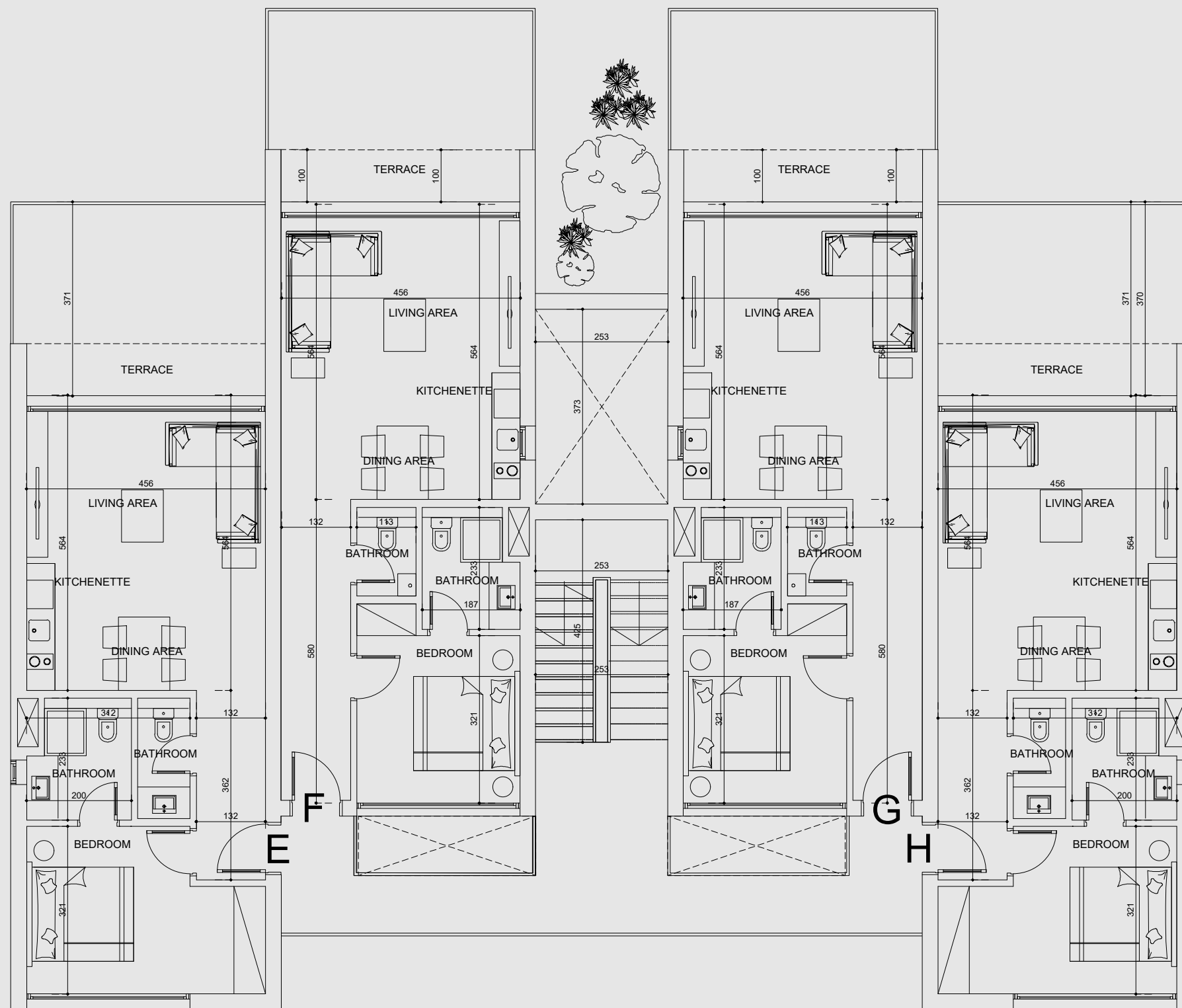
Ground Floor



42

DISCLAIMER 1. Drawings are not to scale. 2. The architectural details, dimensions and area in this plan are based on Schematic Design information only, and final As-Built conditions may vary. 3. All units are sold as unfurnished apartments, without furniture and furnishings, without white goods provisions, etc. 4. All images used are for illustrative purposes only and do not represent the actual size, features, specifications, fittings, and furnishings. 5. Somabay reserves the right to make revisions/alterations, at its absolute discretion, and without liability.

Building Type 5
First Floor



43

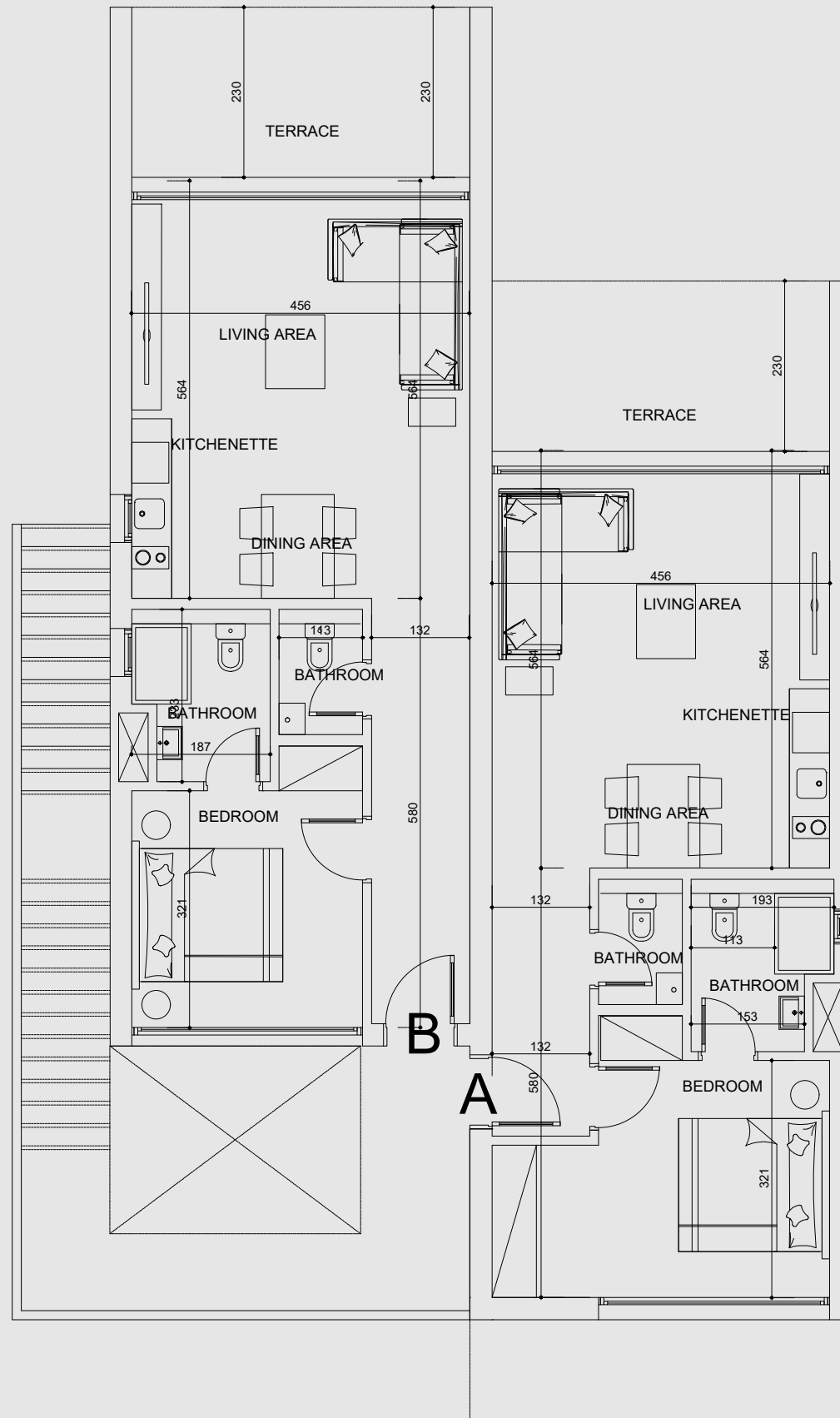
DISCLAIMER 1. Drawings are not to scale. 2. The architectural details, dimensions and area in this plan are based on Schematic Design information only, and final As-Built conditions may vary. 3. All units are sold as unfurnished apartments, without furniture and furnishings, without white goods provisions, etc. 4. All images used are for illustrative purposes only and do not represent the actual size, features, specifications, fittings, and furnishings. 5. Somabay reserves the right to make revisions/alterations, at its absolute discretion, and without liability.

Type A

Building Type Six.

Building Type 6A

Ground Floor

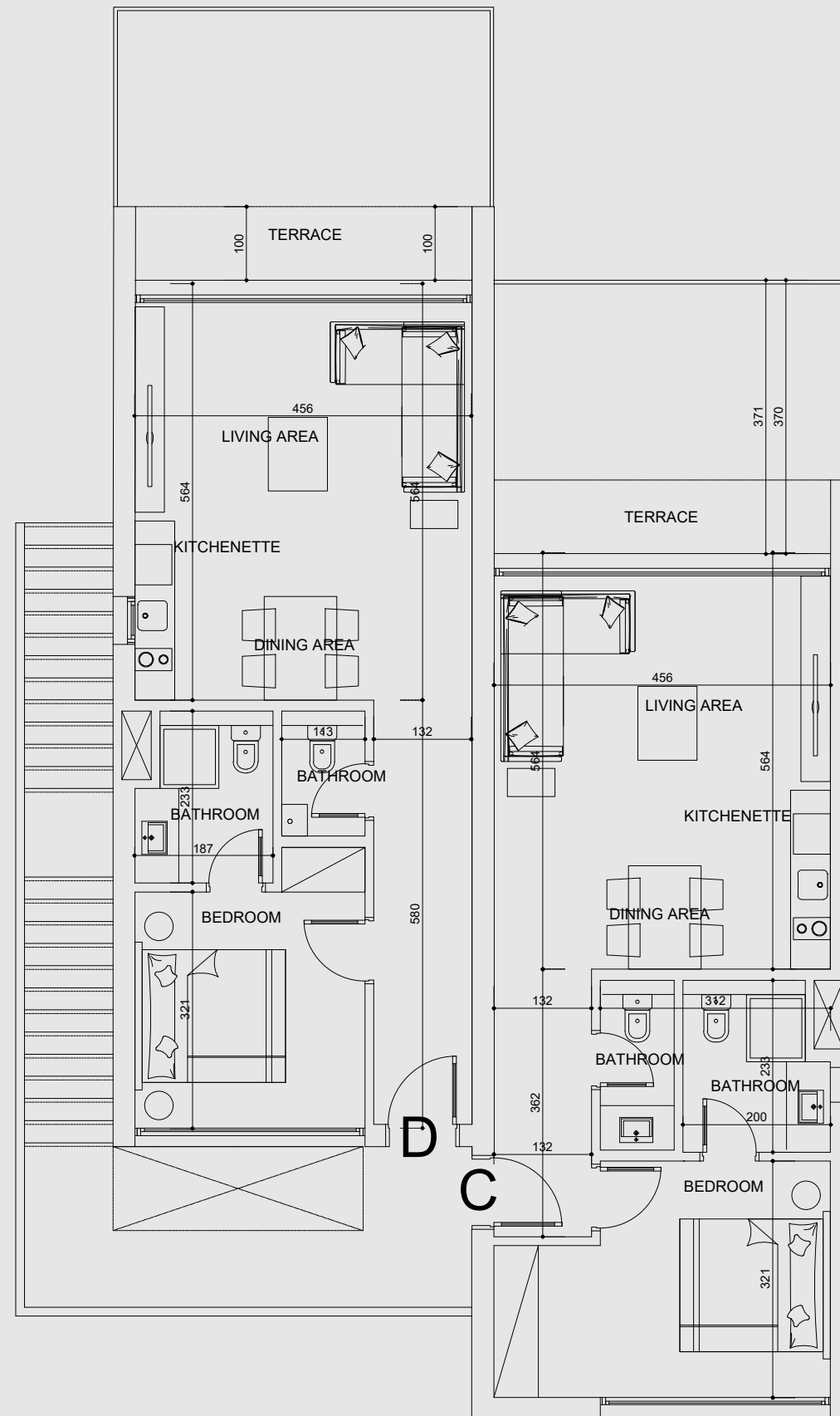


45

DISCLAIMER 1. Drawings are not to scale. 2. The architectural details, dimensions and area in this plan are based on Schematic Design information only, and final As-Built conditions may vary. 3. All units are sold as unfurnished apartments, without furniture and furnishings, without white goods provisions, etc. 4. All images used are for illustrative purposes only and do not represent the actual size, features, specifications, fittings, and furnishings. 5. Somabay reserves the right to make revisions/alterations, at its absolute discretion, and without liability.

Building Type 6A

First Floor



46

DISCLAIMER 1. Drawings are not to scale. 2. The architectural details, dimensions and area in this plan are based on Schematic Design information only, and final As-Built conditions may vary. 3. All units are sold as unfurnished apartments, without furniture and furnishings, without white goods provisions, etc. 4. All images used are for illustrative purposes only and do not represent the actual size, features, specifications, fittings, and furnishings. 5. Somabay reserves the right to make revisions/alterations, at its absolute discretion, and without liability.

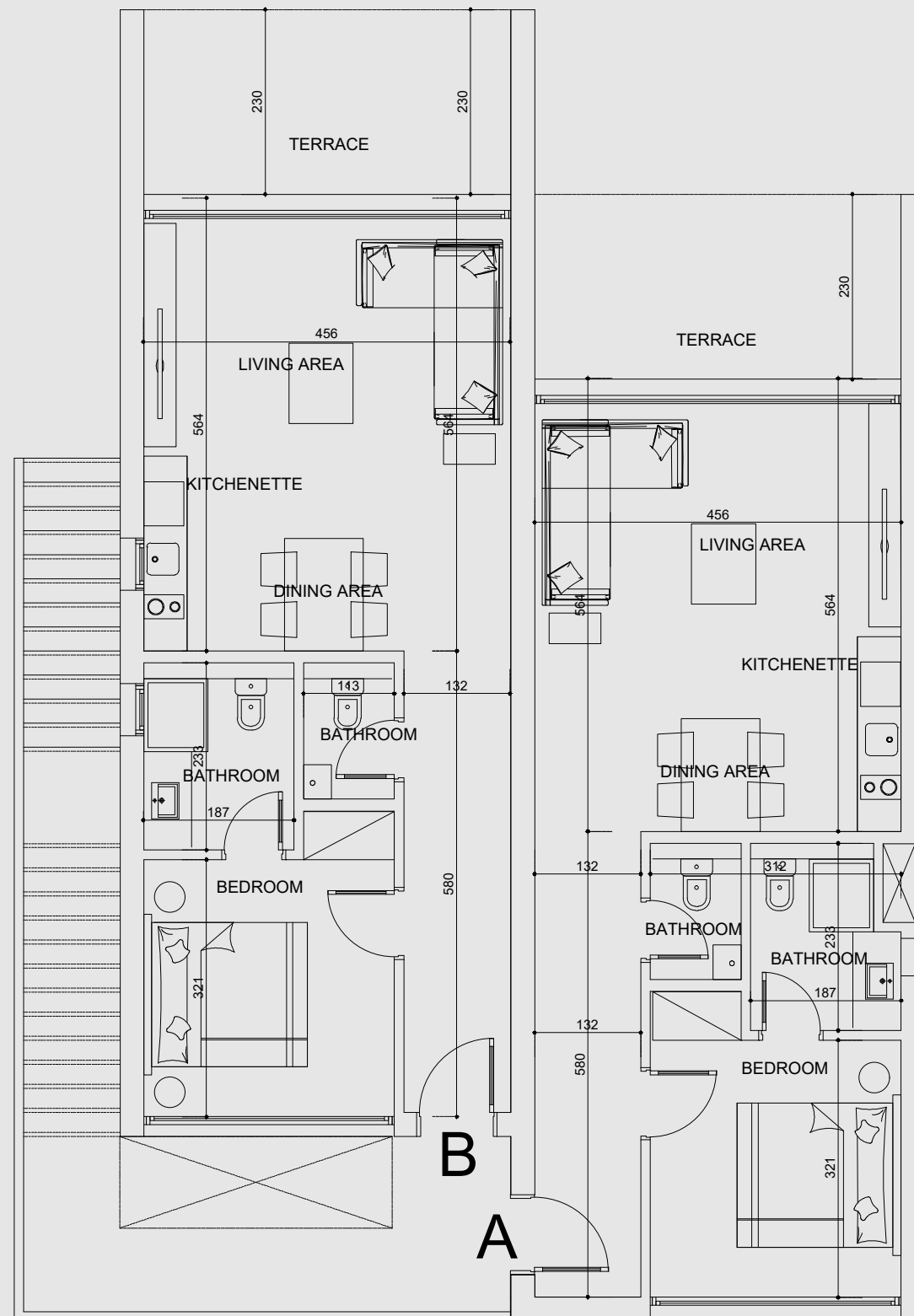
Type B

Building Type

Six.

Building Type 6B

Ground Floor

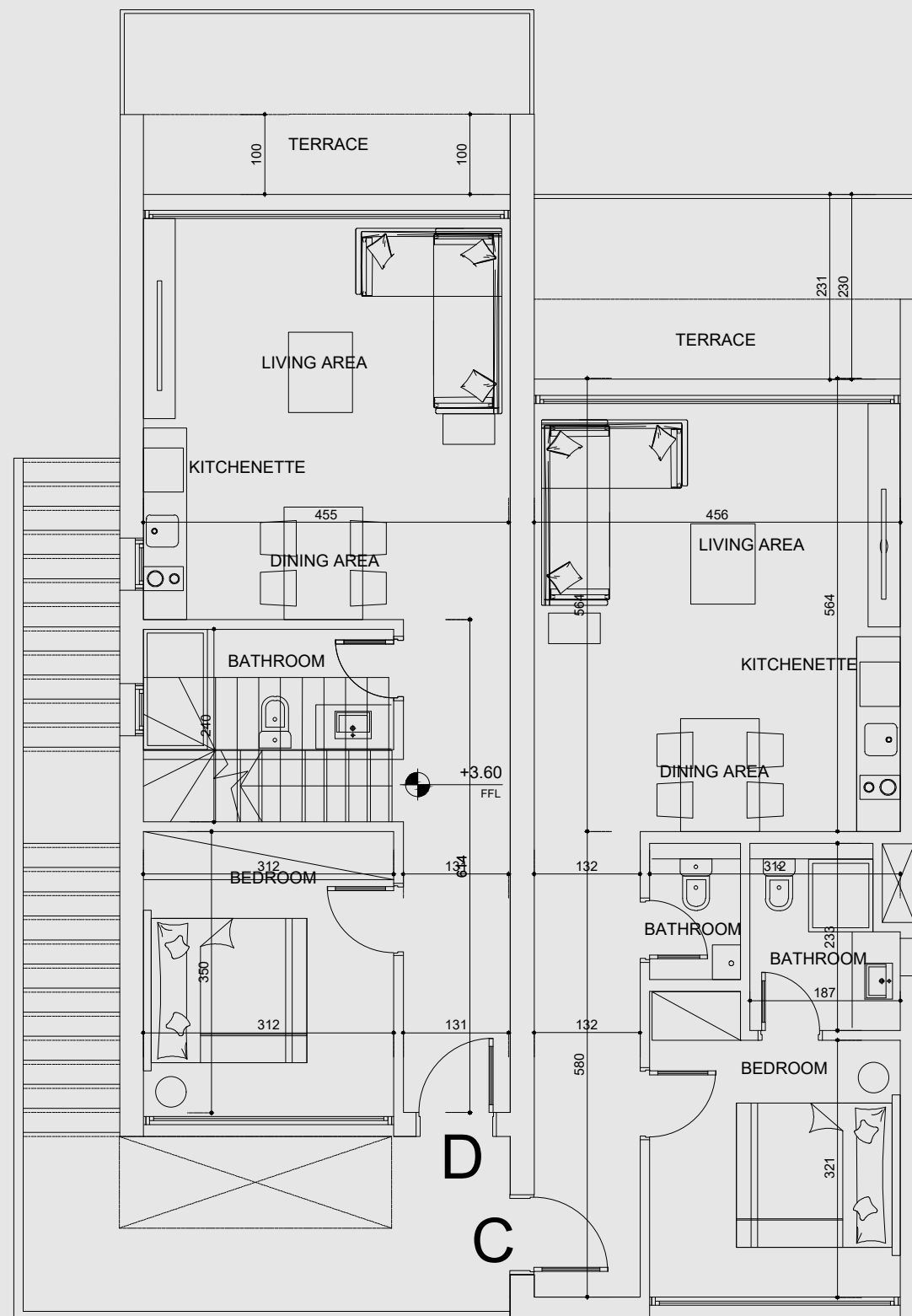


48

DISCLAIMER 1. Drawings are not to scale. 2. The architectural details, dimensions and area in this plan are based on Schematic Design information only, and final As-Built conditions may vary. 3. All units are sold as unfurnished apartments, without furniture and furnishings, without white goods provisions, etc. 4. All images used are for illustrative purposes only and do not represent the actual size, features, specifications, fittings, and furnishings. 5. Somabay reserves the right to make revisions/alterations, at its absolute discretion, and without liability.

Building Type 6B

First Floor

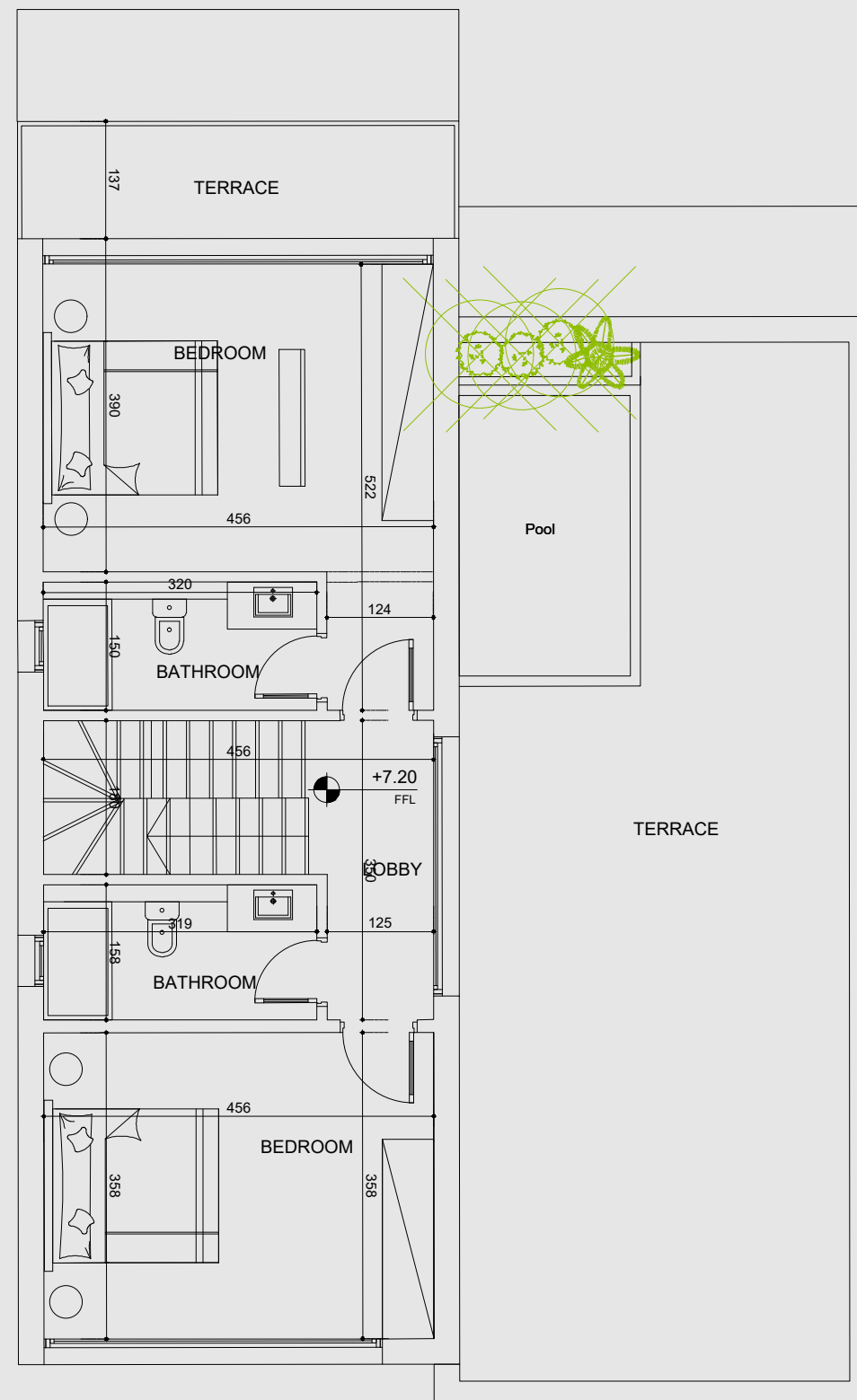


49

DISCLAIMER 1. Drawings are not to scale. 2. The architectural details, dimensions and area in this plan are based on Schematic Design information only, and final As-Built conditions may vary. 3. All units are sold as unfurnished apartments, without furniture and furnishings, without white goods provisions, etc. 4. All images used are for illustrative purposes only and do not represent the actual size, features, specifications, fittings, and furnishings. 5. Somabay reserves the right to make revisions/alterations, at its absolute discretion, and without liability.

Building Type 6B

Second Floor



50

DISCLAIMER 1. Drawings are not to scale. 2. The architectural details, dimensions and area in this plan are based on Schematic Design information only, and final As-Built conditions may vary. 3. All units are sold as unfurnished apartments, without furniture and furnishings, without white goods provisions, etc. 4. All images used are for illustrative purposes only and do not represent the actual size, features, specifications, fittings, and furnishings. 5. Somabay reserves the right to make revisions/alterations, at its absolute discretion, and without liability.

Somabay Experience

An Exciting Itinerary for the Whole Family.

Start your day by teeing off at Somabay Championship Golf Course then unwind at the award winning Cascades Spa and Thalasso and allow the healing powers of the Red Sea to restore balance to your body and soul.

For the more adventurous, ORCA Dive Centre invites you to uncover the untapped wonders of Egypt's marine life at the site's colorful House Reef. Kite surfing lovers can spend a serene afternoon gliding across flat waters at 7Bft –one of the top 3 kite surfing spots in the world- followed by a world-class dining experience at any of the destination's signature restaurants.

Blessed with dry desert winds, low humidity and a front-row seat on immaculate sea views, Somabay dictates an exciting itinerary for the whole family, transforming your everyday reality into a waking dream.



The Somabay Championship Golf Course.

Opening onto spectacular 360 degree views of lush golf greens, azure Red Sea hues and earthy desert tones, The Somabay 18 hole, par 72 Championship Golf Course is designed by legendary golfer Gary Player to ignite guests' love for the sport. Ranked as one of the leading golf courses in Africa, The Somabay Championship Golf Course boasts a state-of-the-art academy, guaranteeing non-stop excitement for amateurs and professionals alike.



53

Somabay Hotels

Somabay opens your eyes on a variety of hospitality options to suit every need. From designed hotels to budget accommodation with impeccable service, the destination guarantees a memorable stay, as well as signature treatment all year.

Kempinski Somabay

Sheraton Somabay

The Cascades Golf Resort,
Spa & Thalasso

Robinson Club

The Breakers

7 Bft The Kite House.

Spend your day gliding across flat idyllic waters at one of the top 3 Kite Surfing spots in the world, offering 365 days of incomparable wind and natural beauty to inspire.

Opening onto a tranquil bay, Somabay embraces pristine beaches and perfect off-shore and side shore winds ranging from 4 to 8 Bft. 7Bft's professional team of instructors are committed to making your kite experience safe, fun and complete by offering exclusive teaching and testing weeks with the latest equipment.

The Kite house is an ideal sea-side escape, offering everything you need from fresh food and refreshing cocktails, as you take in heavenly bay views from the restaurant or bar's open terrace.

An aerial photograph of a vast, turquoise bay. In the center, a kitesurfer is gliding across the water, leaving a white wake. A large, curved kite is visible in the sky above the surfer. In the distance, a coastline with buildings and mountains is visible under a clear blue sky. A small sailboat is also visible on the right side of the bay.

55

ORCA Dive Center.

Escape for hours at sea with ORCA Dive Center and allow Somabay's captivating dive sites and renowned colorful House Reef to leave you in awe. Ideal for beginners and advanced divers alike, our purpose-built diving center is one of the largest and most well-equipped in the Red Sea, led by an international team of instructors who ensure you explore a treasure trove of wonders with safety and ease.

Easily accessible via a 420 meter long jetty that stretches over a kilometer, the House Reef is serviced by electric cards, available to transport equipment and divers for an ultimate fun and hassle-free experience like no other. Boasting a large turquoise-blue lagoon with sheltered waters ideal for training, ORCA dive center is fully equipped with top-of-the-line gear, in addition to snorkeling equipment, in-house photo and video facilities to meet all the needs of the avid underwater photographer and explorer.

The Cascades Spa & Thalasso.

Luxury award winner 'The Cascades Spa & Thalasso' invites you to uncover the most exquisite spa experience in the Middle East. Rolling out on 7,500 m², the spa is an oasis of calm, crowning a front-row seat on the Red Sea's pristine coastline while boasting 65 treatment rooms spanning traditional massages, beauty treatments, hydrotherapy and aesthetic procedures. Take a plunge in our 830 m² Thalasso-Tonic hydrotherapy pool and allow the wonders of the Red Sea to restore balance to your mind, body and soul.



57

Somabay Marina

Somabay's comprehensive Marina is a peaceful haven for immaculate sea views and a unique location for nautical fans wishing to dock their boats at a competitive price. Boasting world-class services and conditions for mooring, the Marina offers a wide array of quality services and facilities directly available at quayside, so you can enjoy sailing smoothly through life.



58



SOMABAY

4A Hassan Sabry St. Zamalek, Cairo, Egypt.

Capital Business Park, Building B4, 26th of July Corridor,
1st floor, Sheikh Zayed, Giza, Egypt.

Postal Code. 41516, Somabay office

16390

somabay.com

discoversomabay.com

DISCOVER
SOMABAY